

# **South Central Texas Winter Weather Event**

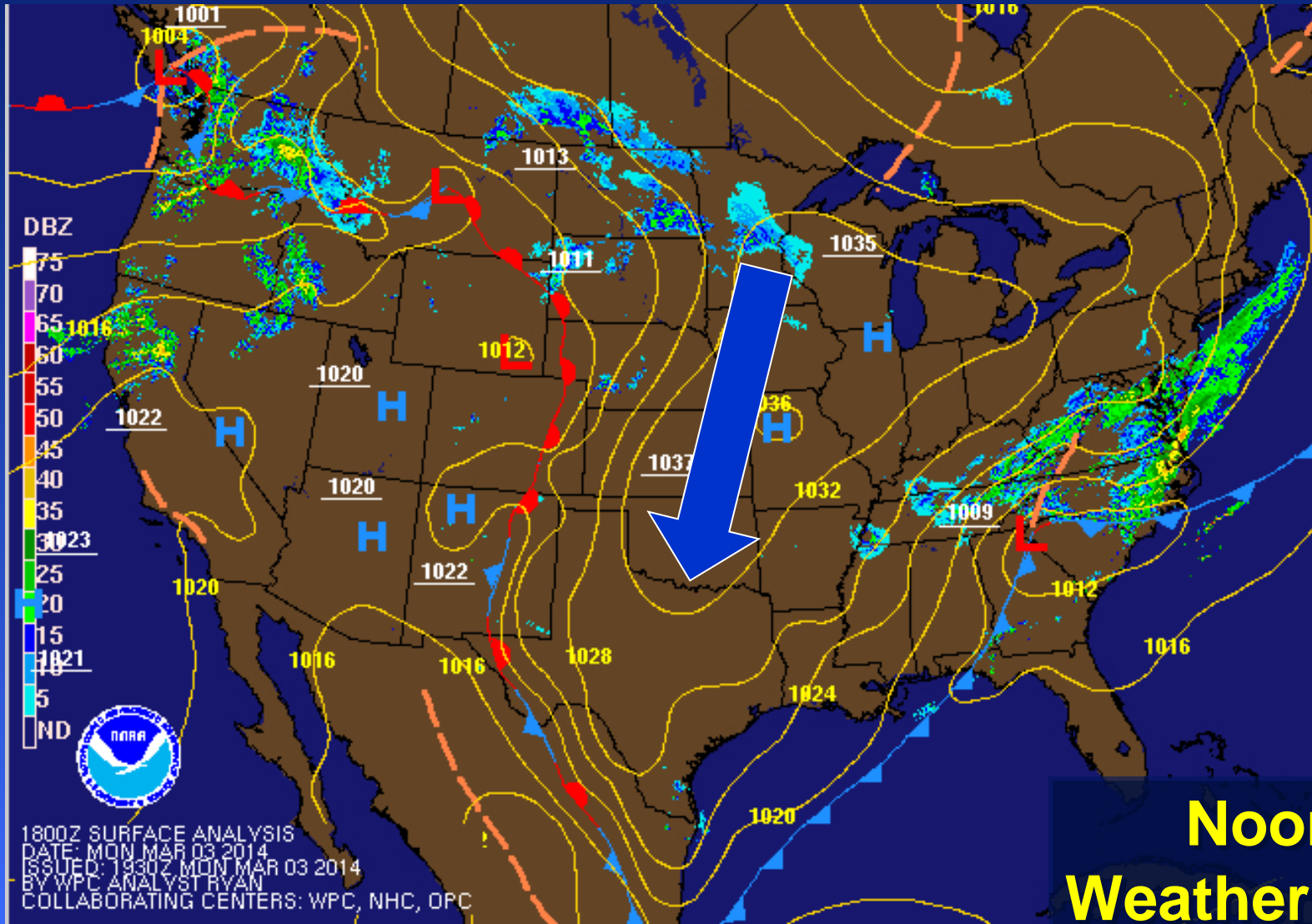


**City of San Antonio WX Briefing  
230 pm...March 3, 2014**

**National Weather Service Austin-San Antonio TX**

# The Setup

Cold High Pressure  
(Arctic Air) is in place



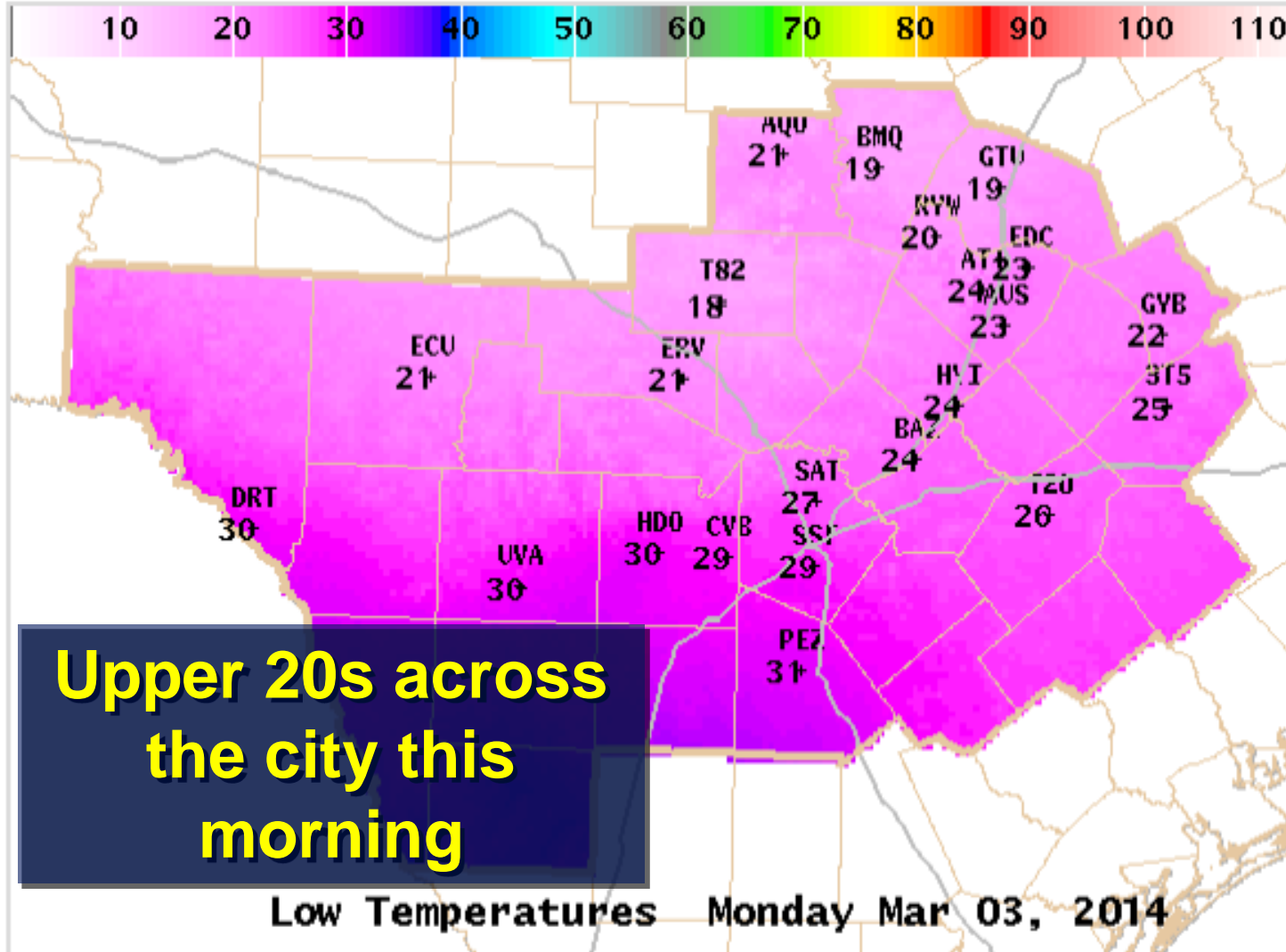
Noon  
Weather Map

# The Setup

Low Temps Monday Morning...Cold Arctic air in place



## Observed High/Low Temperatures

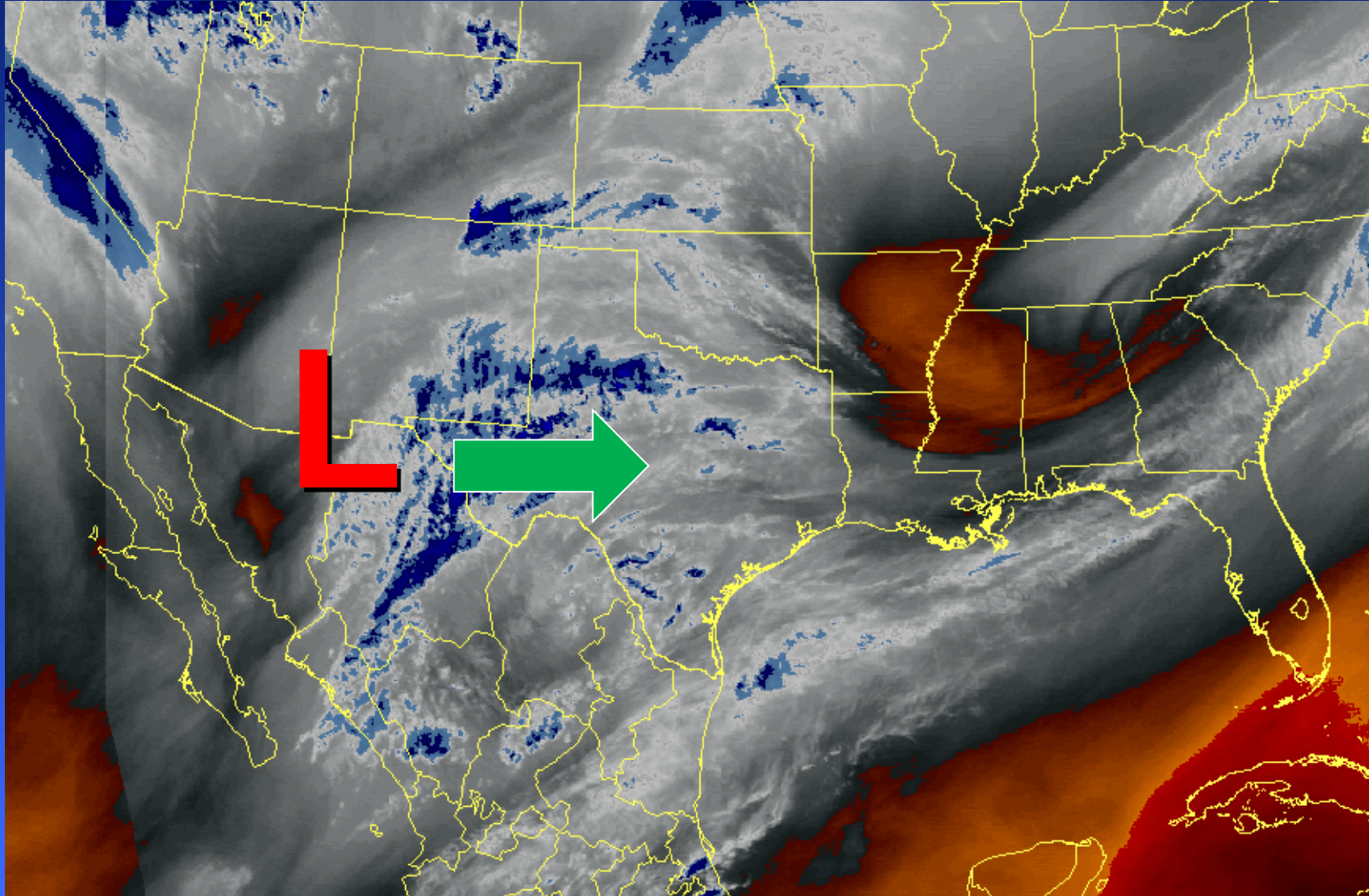


Upper 20s across the city this morning

Low Temperatures Monday Mar 03, 2014

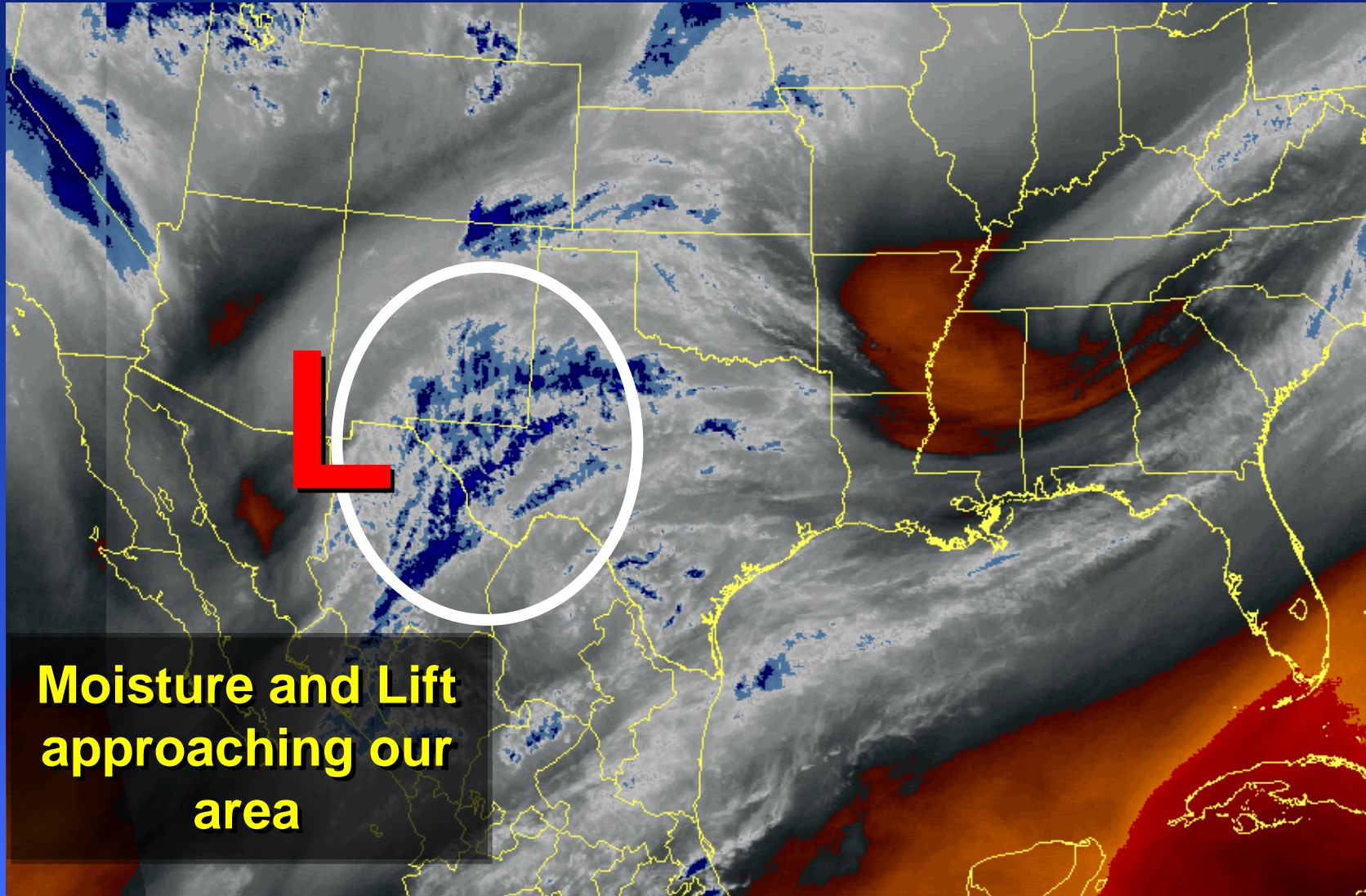
# The Setup

Upper Level Disturbance approaches from the West tonight.



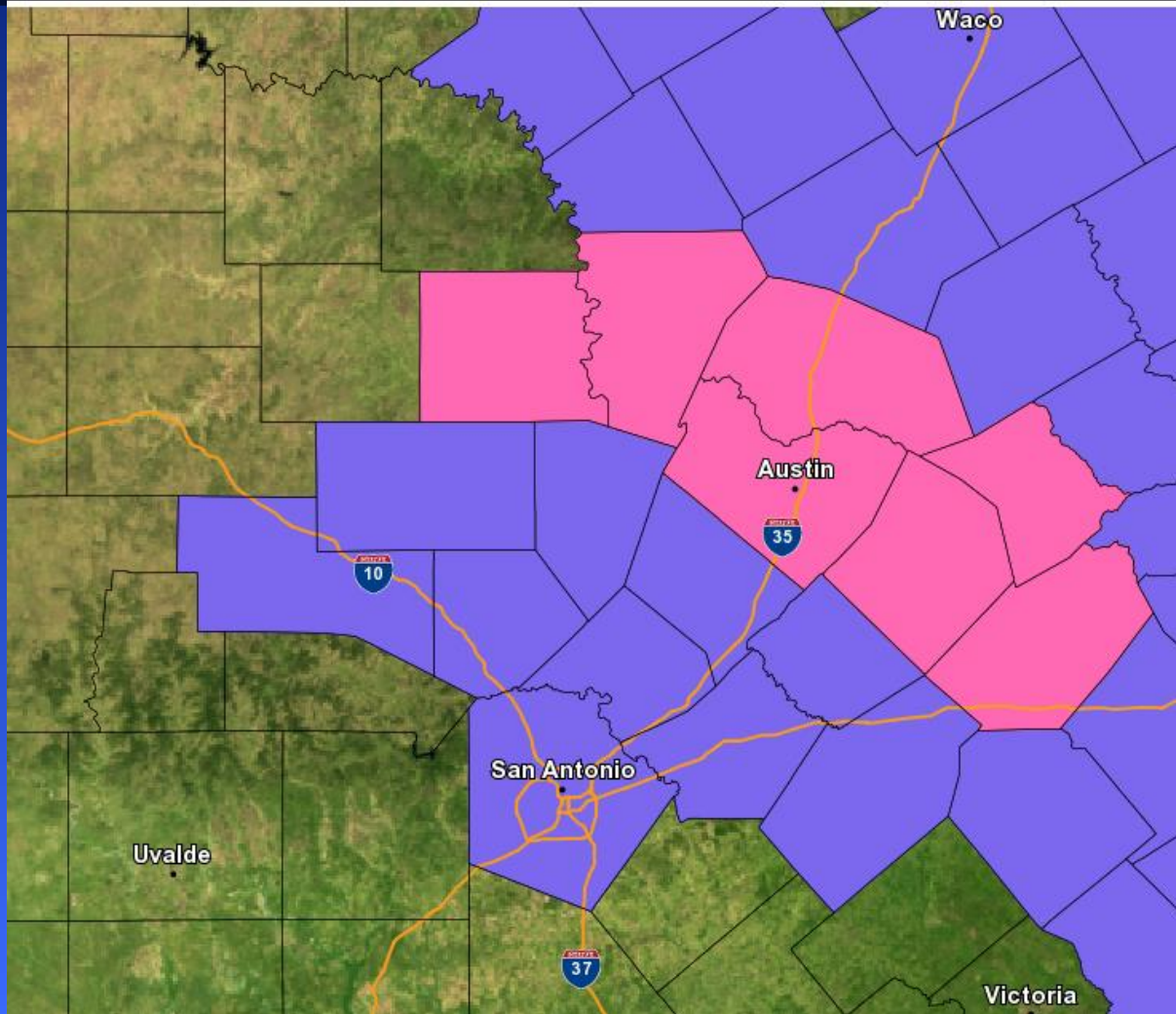
# The Setup

Upper Level Disturbance approaches from the West tonight.



Moisture and Lift approaching our area

# Winter Weather Advisory for Bexar County...8PM tonight thru Noon on Tuesday



Latest NWS Watch  
Warnings and  
Advisories

- Winter Storm Warning
- Winter Weather Advisory

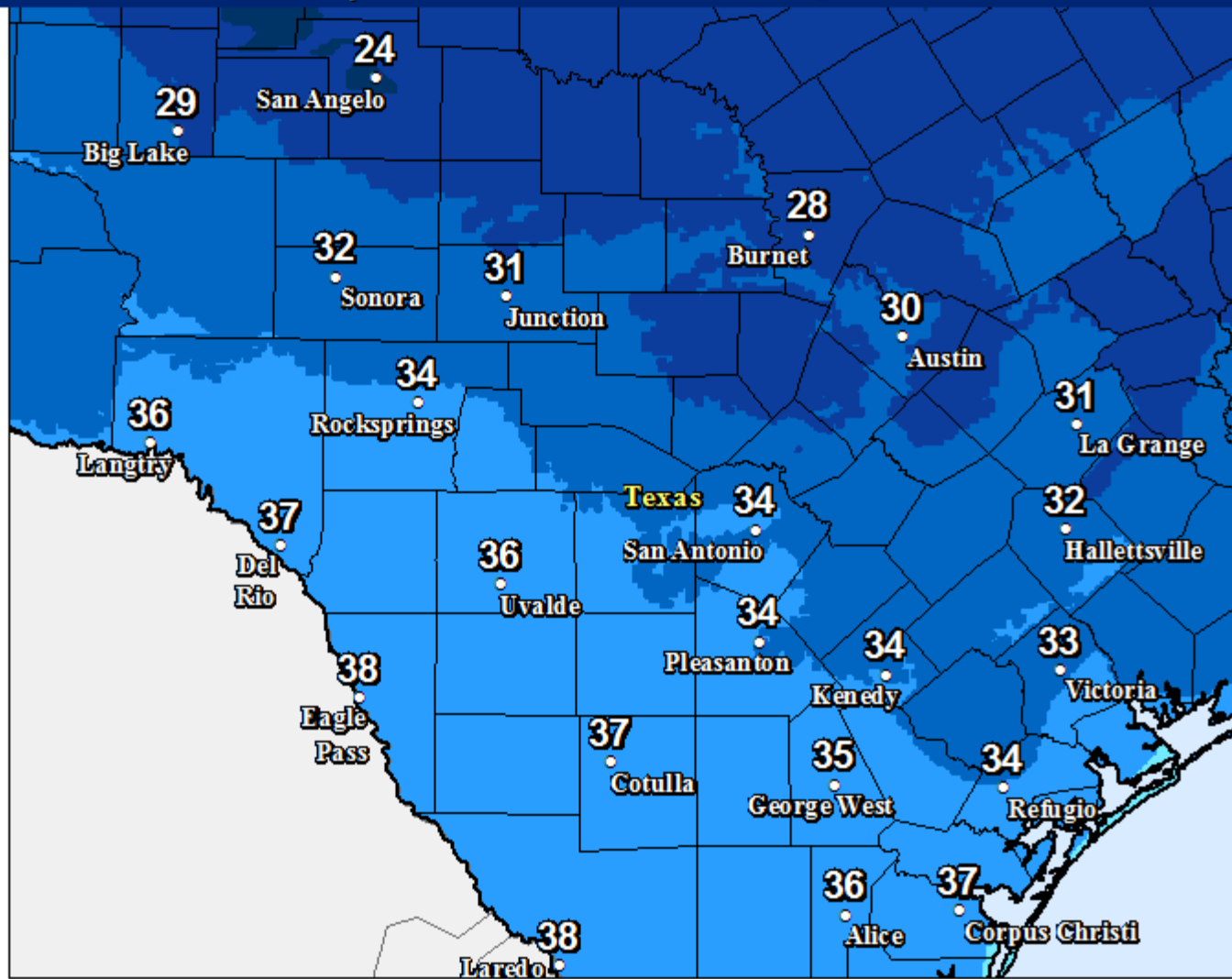
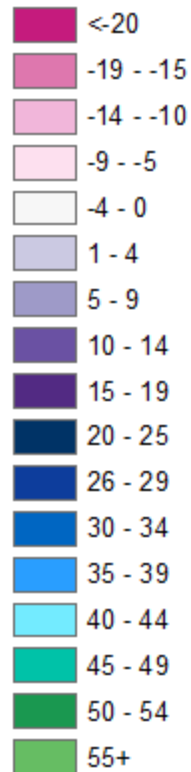


# Forecast Low Temperatures Tuesday Morning



Minimum Temperature Forecast - March 04, 2014

## Fahrenheit



Created by the  
NWS Forecast Office  
Austin/San Antonio, TX



0 25 50 Miles

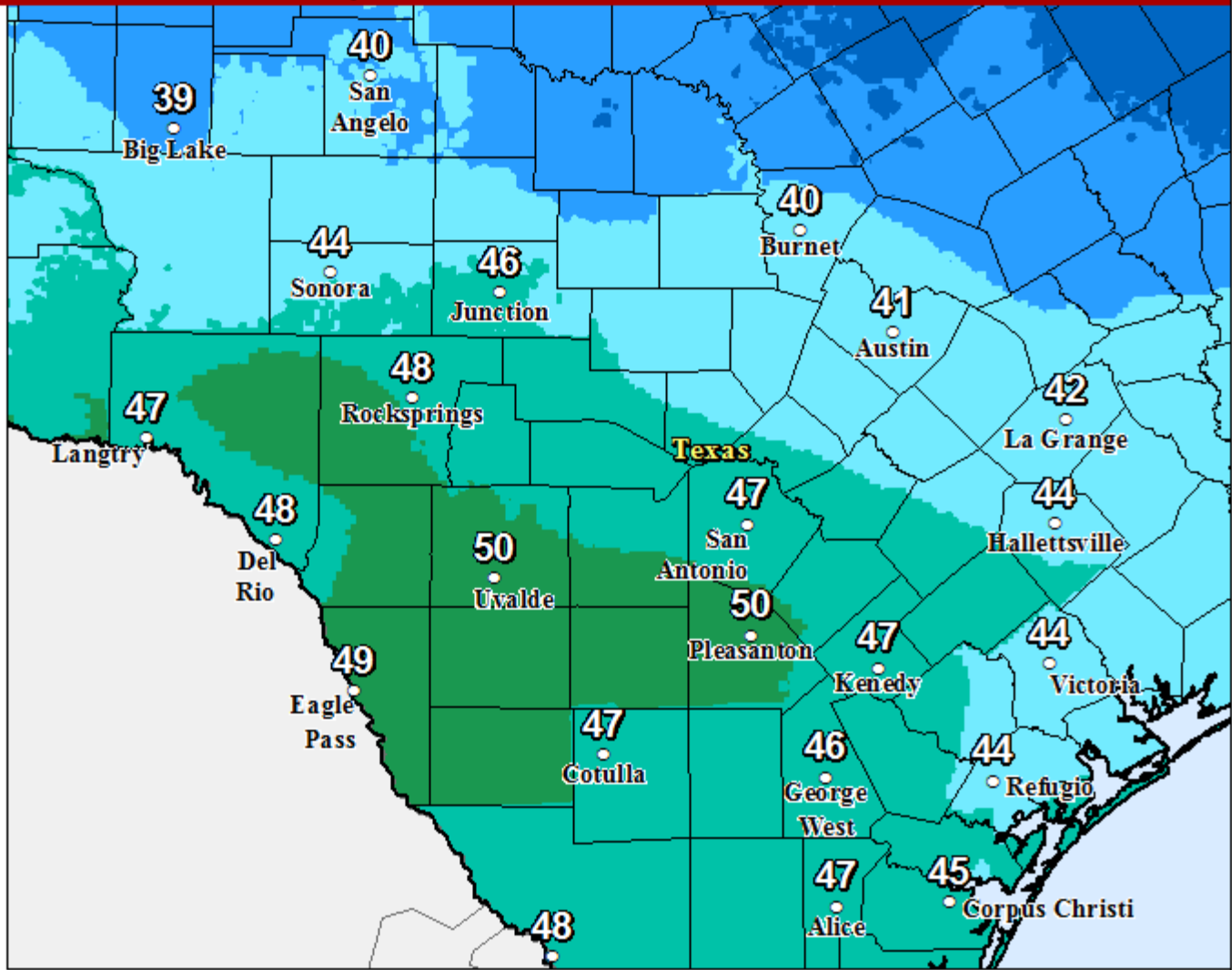
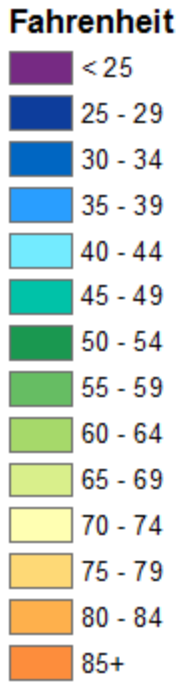
Source: NWS National  
Digital Forecast Database

Created: 03/03/2014 1800 UTC

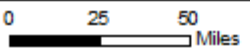


# Forecast High Temperatures Tuesday

Maximum Temperature Forecast - March 03, 2014



Created by the NWS Forecast Office Austin/San Antonio, TX



# Impacts and Timing



## Impacts: Winter Weather Advisory Area

- Possible freezing rain/sleet expected to cause a light ice accumulation on bridges, overpasses, exposed surfaces. Trace amounts of accumulation.
- Most roads are expected to be drivable with only isolated icy spots. Northern 1/3<sup>rd</sup> of Bexar County most vulnerable.
- The morning commute may have delays with some overpass/bridge closures. Use extreme caution.
- Isolated thunderstorms may bring isolated higher totals of ice/sleet accumulation

# Impacts and Timing



## Timing:

- **Precipitation should start between 8pm and midnight...lasting through early afternoon on Tuesday.**
- **Time from Midnight - 10 am Tuesday will see the highest impacts...this is when temperatures will likely be below freezing in northern Bexar County.**

# Impacts and Timing



## Timing:

- **Temperatures will be the key...dropping below freezing possibly by 2-3 am over the far northern sections of Bexar County. City of San Antonio will be “borderline”**
- **Any precipitation that lingers over the eastern half of South Central Texas early afternoon will likely be liquid and not frozen.**

# Reminders:



**Stay at home if you don't have to go out on the roads**

**Monitor all the weather through the NWS webpage at [www.weather.gov/Sanantonio](http://www.weather.gov/Sanantonio)**

**Follow us on Social Media...**



**@NWSSanAntonio**



**US National Weather Service  
Austin-San Antonio TX**