

# **South Central Texas Heavy Rain Event**

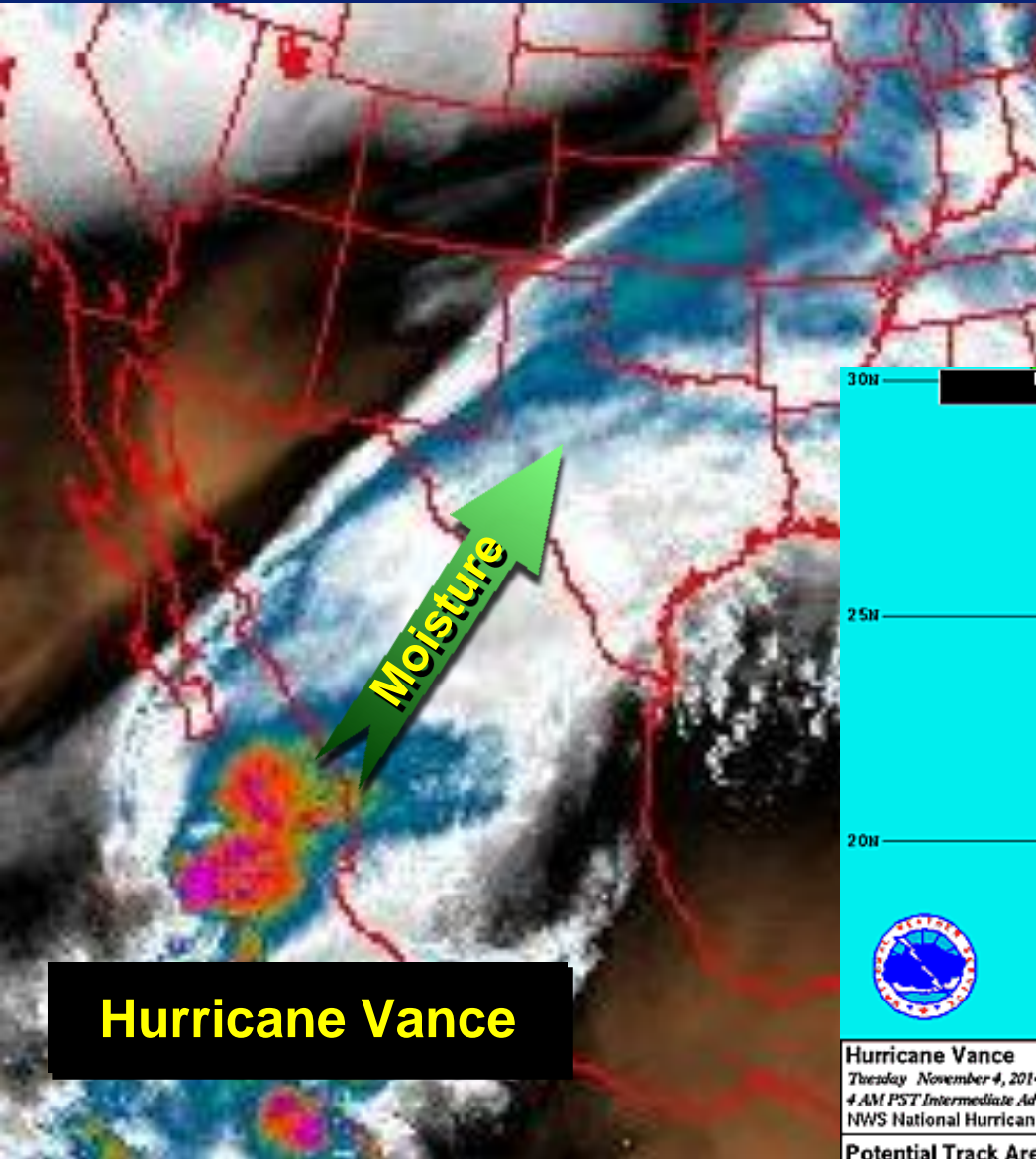


**Weather Briefing for  
South Central Texas**

**930 AM...Nov 04 2014**

**National Weather Service Austin-San Antonio TX**

# The Setup - Pacific Moisture Tap



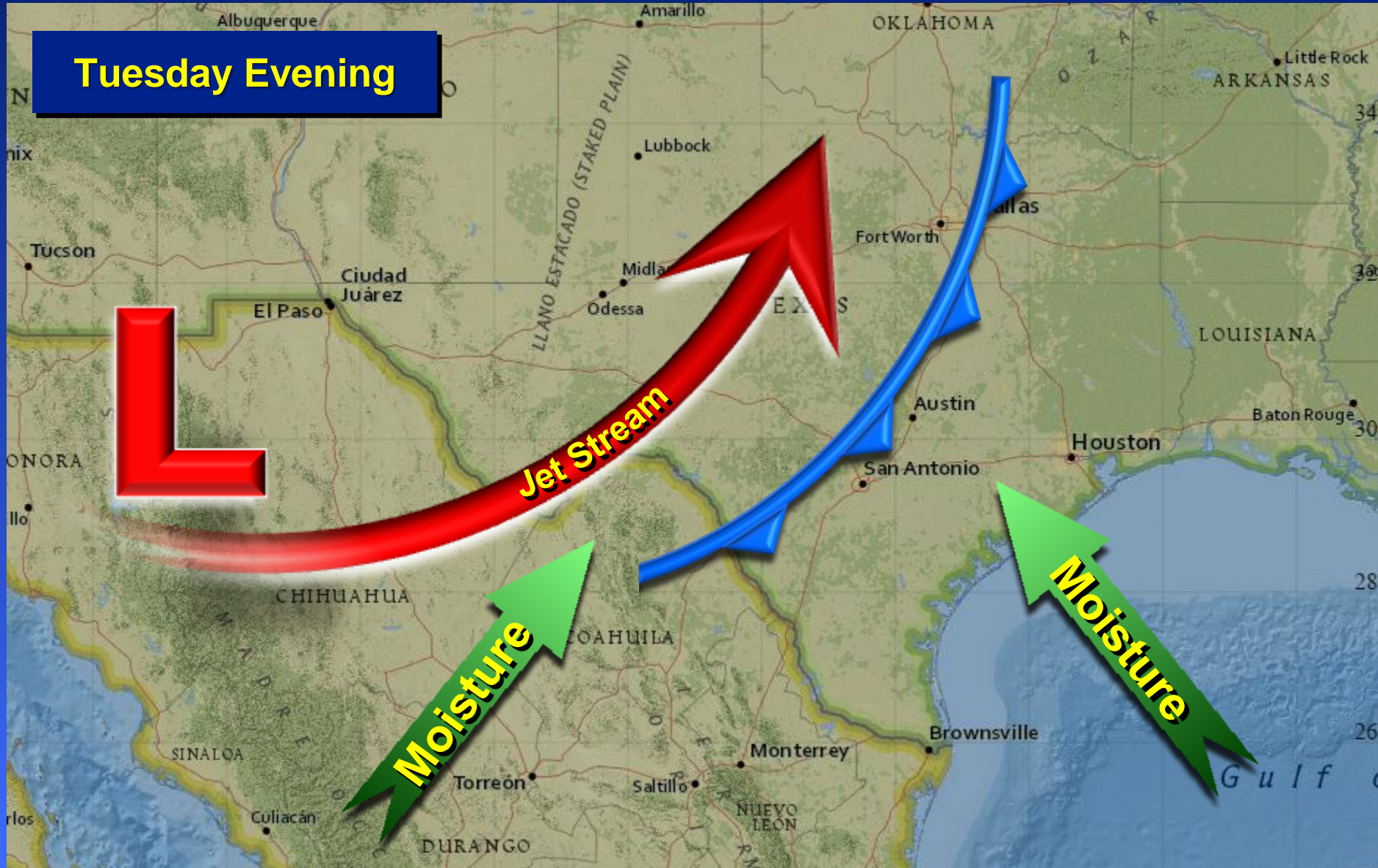
**Hurricane Vance**

**Hurricane Vance in the Eastern Pacific is spreading plenty of tropical moisture into Texas**

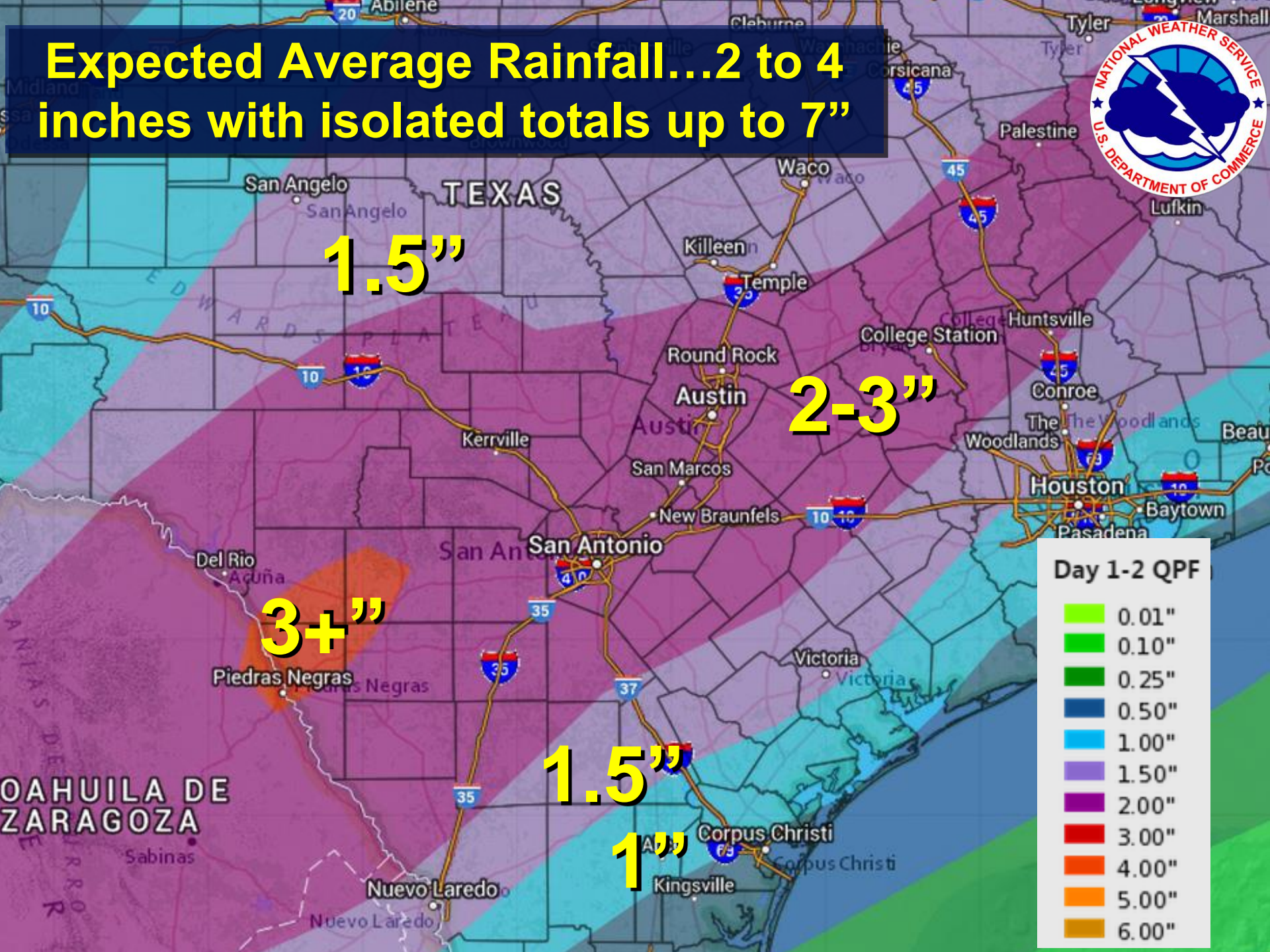


# The Setup - Approaching Cold Front and Upper Level Disturbance

Tuesday Evening



# Expected Average Rainfall...2 to 4 inches with isolated totals up to 7"



1.5"

2-3"

3+"

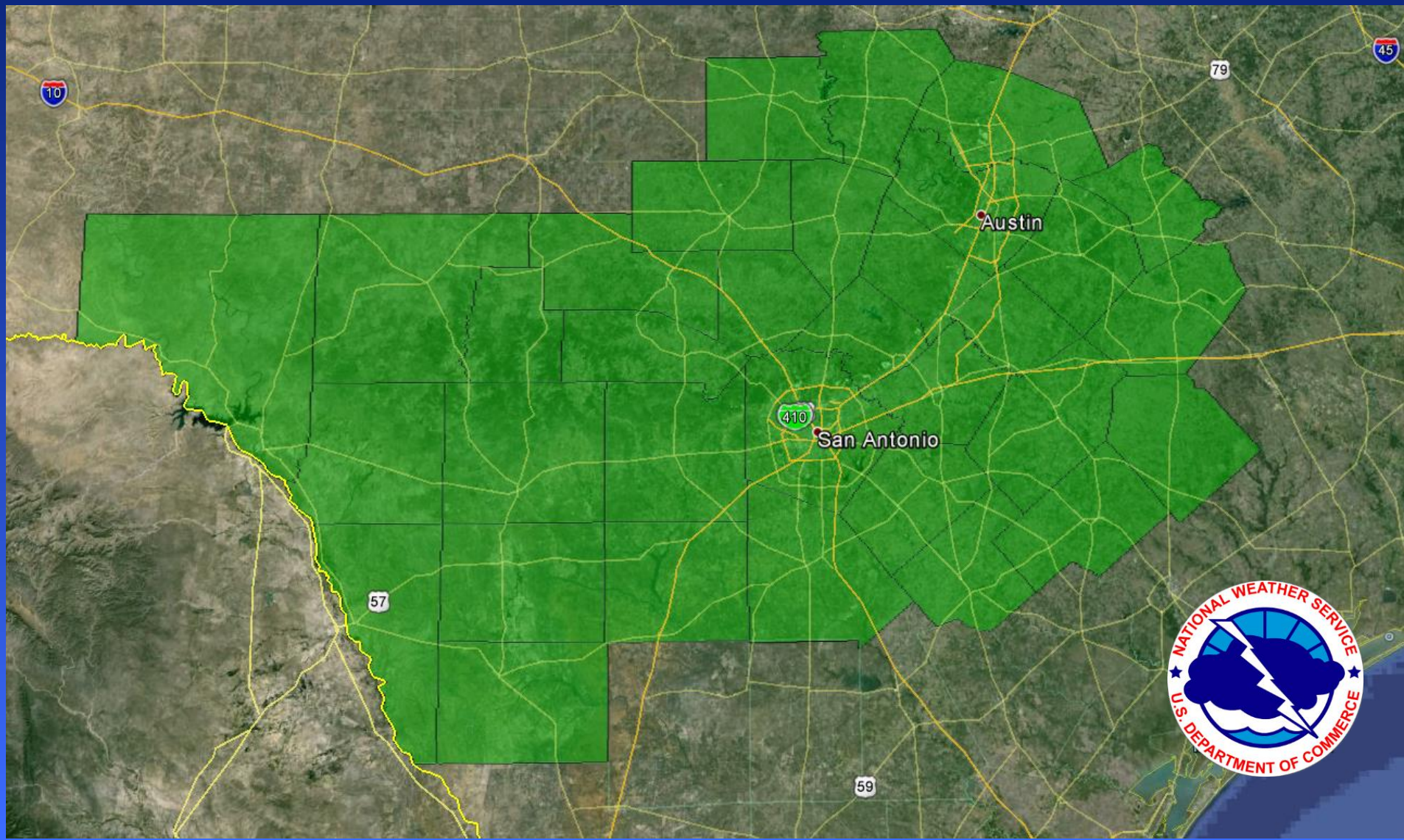
1.5"

1"

## Day 1-2 QPF

- 0.01"
- 0.10"
- 0.25"
- 0.50"
- 1.00"
- 1.50"
- 2.00"
- 3.00"
- 4.00"
- 5.00"
- 6.00"

# Flash Flood Watch 6 PM Tue -12 PM Wed



# Impacts and Timing



## Impacts:

- **Flash flooding...widespread heavy rains of 2-4 inches with isolated totals up to 7 inches...especially along and east of I-35 corridor including Austin/San Antonio**
- **Streams/creeks/low water crossings across South Central Texas could experience flash flooding.**
- **Some roads may become impassable.**
- **Rain rates on the order of 1-2 inches per hour at least.**
- **Thunderstorms with dangerous lightning.**

# Impacts and Timing



## Timing:

- **A cold front will move into the Hill Country Tuesday afternoon and into the I-35 corridor in the evening.**
- **Some rain will start by Tuesday Afternoon.**
- **Heaviest rainfall will likely occur between 6 PM Tuesday until 8 AM Wednesday. Peak intensities will be Tuesday 8 PM - 4 AM Wednesday .**
- **Heavy rain and the associated cold front will push east of I-35 Wednesday morning to areas mainly south of a Carrizo Springs/San Antonio/Hallettsville line.**

# Reminders:



## Turn Around...Don't Drown

- **Stay at home if you don't have to go out on the roads**
- **Most Flash Flood Fatalities occur at night while driving.**

**Monitor all the weather through the NWS webpage at [www.weather.gov/austin](http://www.weather.gov/austin)**