



Electrical & Computer Engineering

RESEARCH

EXPERIENCE FOR

UNDERGRADUATES

REU Syllabi



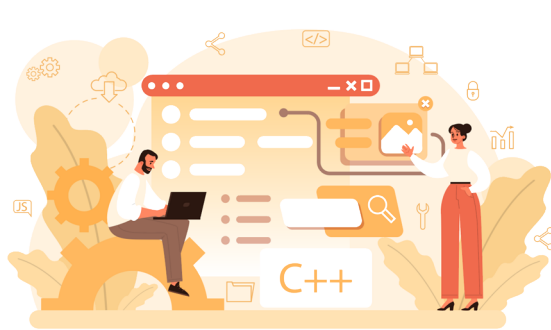
ECE provides **REU Independent Study** course. These courses will be made available each Fall and Spring semester. These Independent Study courses are geared towards undergraduate research. **It is highly encouraged that you speak to the instructor prior to enrolling in the course to see if the topic requires prior knowledge or recommended pre-requisites.**

Each REU Independent Study section will have limited seating, so this is **first-come first-serve**. **Must be an ECE Junior or Senior to be eligible** to enroll in.

This course is eligible to count towards **Signature Experience: Research**. Each section will have information in the comments to tell you the topic. More info can be seen in the posted syllabi.

Instructions on how to sign up on next page.

For questions, email Khanh.Nguyen@utsa.edu



How To Sign Up:

1) Check the **Class Schedule** for EE 4913-Independent Study

- Find the ones labeled for REU

EE	4913	013	20562	REU: Adv of Neuromorphic AI	3	S M T W T F S	Type: To be arranged Outside	Rudolph, Doretha	Man
EE	4913	014	20564	REU: High Speed Optical Comm	3	S M T W T F S	Type: To be arranged Outside	Shahram, Mehdi (Ph	Man
EE	4913	015	20567	REU: Intelligent Systems for Robotics	3	S M T W T F S	Type: To be arranged Outside	Chen, Mingde (Man
EE	4913	016	20566	REU: Adv of AI in IoT Systems	3	S M T W T F S	Type: To be arranged Outside	Khan, Bilal (PhD)	Man
EE	4913	017	20568	REU: Tiny ML on Embedded Sys	3	S M T W T F S	Type: To be arranged Outside	Pat, Omer (PhD)	Man
EE	4913	018	20569	REU: Swarm Robotics & Optimization	3	S M T W T F S	Type: To be arranged Outside	Wang, Chang (PhD)	Man
EE	4913	019	20570	REU: Human-Machine Chat System	3	S M T W T F S	Type: To be arranged Outside	Alipour, Davod (PhD)	Man
EE	4913	020	20571	REU: Camera Performance Eval	3	S M T W T F S	Type: To be arranged Outside	John, Eustace (PhD)	Man

2) Fill out and sign the Independent Study Form

- Instructor signature not needed but it is highly encouraged that you speak to the instructor prior to enrolling in the course to see if the topics has recommended prior knowledge or recommended pre-req classes

3) Download and include syllabus for the specific section

Independent Study Form



REU Syllabi



4) Email filled out pdf form to **Electrical.Engineering@utsa.edu**

- Dept and Dean's office will sign
- Dean's office will email you back the fully signed form

5) You need to **upload the form and syllabus to Document Uploader >>>>**

- Registrar will enroll you into the class as long as there are available seats
- Don't forget to also enroll in EID 3200 course if needed for your catalog

Document
Uploader

